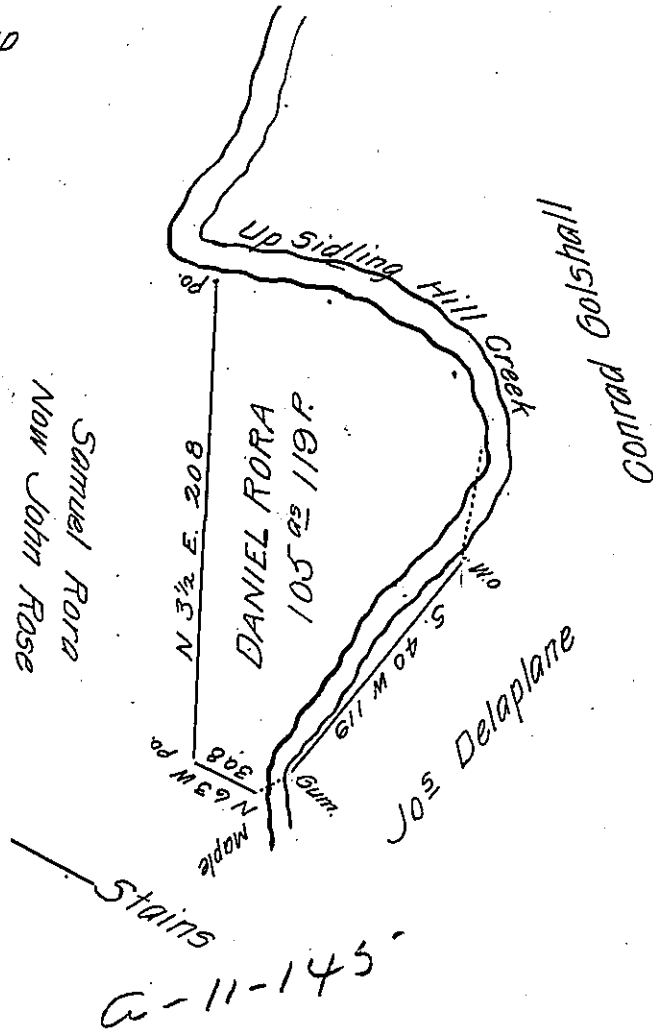


Courses & Distances up
Sidling Hill Creek from
the post to the Maple

- S 77 E 48.
- S 58 E 64.
- S 17 E 33.
- S 14 W. 47.1 W.O.
- S 40 W 119. Gum
- S 44 W 11.7 Maple

Page
284



Situate in Springfield Township, Huntingdon County, Containing one Hundred & five acres & 119 perches & Allowance & C. Surveyed the 1st day of May 1846 on Warrent Granted to Daniel Rora for 100 acres Dated the 15th day of March 1816, (with Int from 1st March 1773)

Sam! Caldwell D.S.

Gen! John Laporte Esqr. S.G.

IN TESTIMONY that the above is a copy of the original remaining on file in the Department of Internal Affairs of Pennsylvania, made conformably to an Act of Assembly approved the 16th day of February, 1833, I have hereunto set my Hand and caused the Seal of said Department to be affixed at Harrisburg, this twelfth day of October 1906.

Isaac D. Brown
Secretary of Internal Affairs.